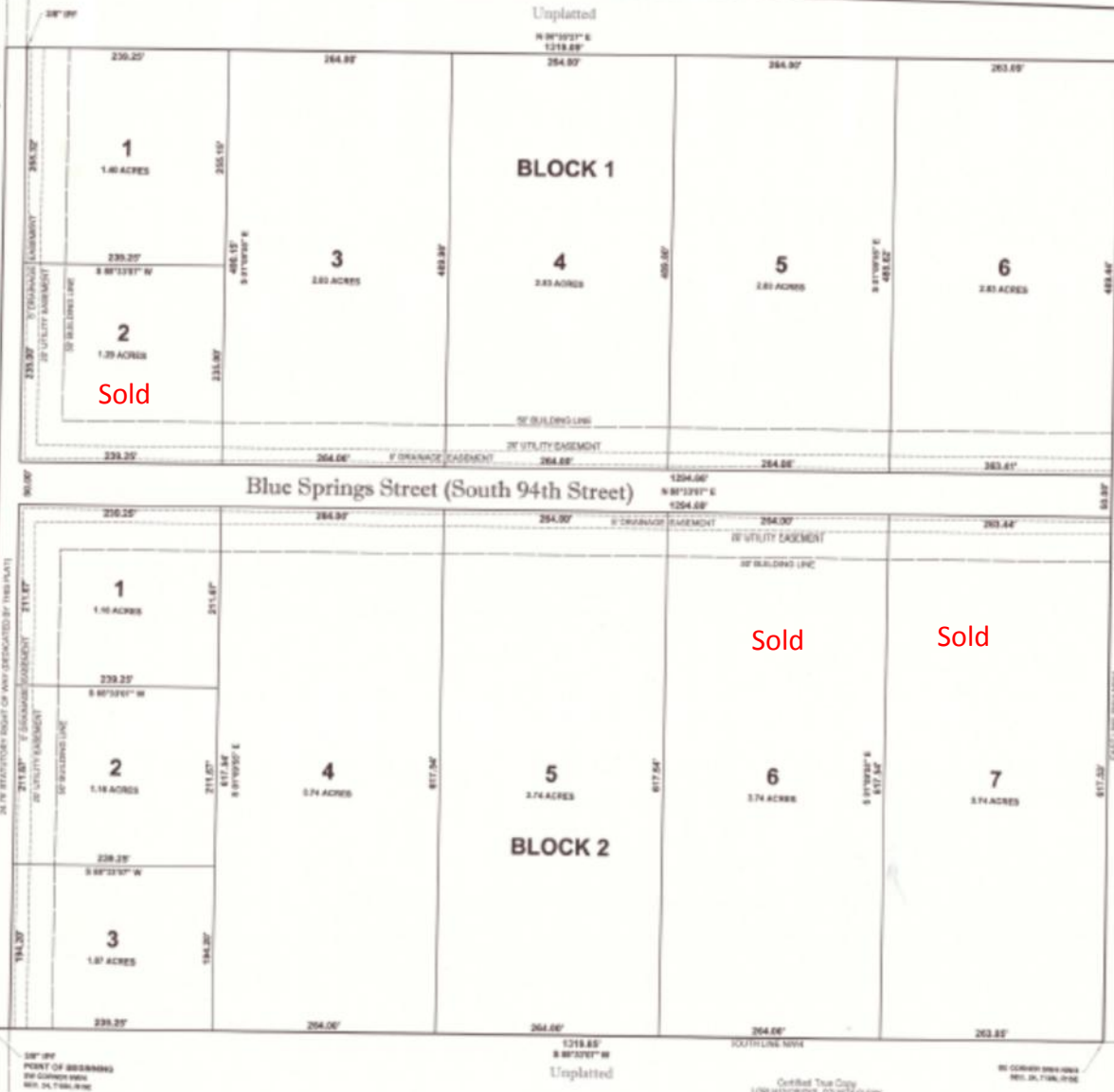


Oak Grove Road (273rd East Avenue)



FINAL PLAT

Blue Springs West

A REVISION OF THE INCORPORATED PLAT OF BLUE SPRINGS WEST I.P.P. A REVISION OF THE SOUTH 94TH AVENUE OF THE MUNICIPALITY OF BLUE SPRINGS, MISSOURI, IS HEREBY REOPENED FOR RECORD.

PLCS-420A



MONUMENTATION
ALL CORNERS SHOWN HEREON HAVE SET BY BRASS OR IRON PIPES WITH PLASTIC CAPS STAMPED "12448 4702" AT ALL CORNERS. (SEE LIST ATTACHED)
NOTE:

BASIS OF BEARINGS
OAKHURST STATE PLANT - 220° NORTH

NOTES
RIGHT-OF-WAY FOR BLUE SPRINGS STREET SOUTH WITH STREET AND OAK GROVE ROAD (273RD EAST AVENUE) ARE DEDICATED FOR PUBLIC USE BY THIS PLAT.

DEVELOPER
BLUE SPRINGS, LLC
200 SOUTH MAIN STREET
SPRINGFIELD, MO 65704
PHONE: 417-336-1500

SURVEYOR
ATLAS LAND OFFICE, LLC
200 SOUTH MAIN STREET
SPRINGFIELD, MISSOURI 65704
PHONE: 417-336-1500
FAX: 417-336-1501
E-MAIL: INFO@ATLASOFFICE.COM
C.A.#8763 LICENSE #A-104-0209

SUMMARY
SUBDIVISION CONTAINS TWENTY-THREE (23) LOTS IN TWO (2) BLOCKS.
MIDDLE RANGING AREA: 100'x162.5' (33.88 ACRES)

APPROVAL BY MISSOURI COUNTY METROPOLITAN PLANNING COMMISSION
I, CLARENCE ROBERTSON, CHAIRMAN OF THE MISSOURI COUNTY AREA PLANNING COMMISSION, DO HEREBY CERTIFY THAT THIS COMMISSION HAS APPROVED THE PLAT OF BLUE SPRINGS WEST THIS 21st DAY OF SEPTEMBER, 2011.

Clarence Robertson
CLARENCE ROBERTSON, CHAIRMAN

ACCEPTANCE BY BOARD OF COMMISSIONERS
BEFORE ME, CLARENCE ROBERTSON, CHAIRMAN OF THE BOARD OF COMMISSIONERS OF MISSOURI COUNTY, OREGON, THAT THE INFORMATION SHOWN ON THE ATTACHED PLAT OF BLUE SPRINGS WEST IS TRULY AND CORRECTLY AS SHOWN AND THAT THE BOARD WILL MAINTAIN RECORD OF ALL INFORMATION OF ALL INFORMATION AND CONSTRUCTION REQUIREMENTS ARE FULFILLED PRIOR TO THEIR ACCEPTANCE OF RELEVANT MAPS BY THE BOARD OF COUNTY COMMISSIONERS. THE COUNTY COMMISSIONERS SHALL HAVE NO LIABILITY ASSIGNED BY THE DEVELOPER THAT THE BOARD SHALL BE BOUND TO ENFORCE THE REQUIREMENTS. THESE AFFIDAVITS SHALL BE FILED WITH THE BOARD OF COUNTY COMMISSIONERS ON THE PLAT THAT THESE MAPS SHALL BE MAINTAINED BY THE COUNTY.

APPROVED BY THE BOARD OF COUNTY COMMISSIONERS OF MISSOURI COUNTY, OREGON, THIS 21st DAY OF SEPTEMBER, 2011.

[Signature]
MISSOURI COUNTY COMMISSIONERS

CERTIFICATE OF COUNTY TREASURER
I, DAVID PATTON, THE COUNTY TREASURER FOR MISSOURI COUNTY, OREGON, DO HEREBY CERTIFY THAT I HAVE EXAMINED THE RECORDS OF THE MISSOURI COUNTY CLERK AND HAVE FOUND THAT THE TRACT SHOWN ON THE ATTACHED PLAT AND THAT ALL AS VALUATION TAXES ARE PAID TO AND INCLUDING HEREIN.

David Patton
MISSOURI COUNTY TREASURER

CERTIFICATE OF COUNTY CLERK
I, LORI HENDERSON, THE COUNTY CLERK OF MISSOURI COUNTY, DO HEREBY STATE THE SUBDIVISION CALLED BLUE SPRINGS WEST HAS BEEN FILED BY THE MISSOURI COUNTY TREASURER.

Lori Henderson
MISSOURI COUNTY CLERK

DEPARTMENT OF ENVIRONMENTAL QUALITY CERTIFICATE
THE MISSOURI COUNTY OFFICE OF THE OREGON DEPARTMENT OF ENVIRONMENTAL QUALITY HAS APPROVED THIS PLAT FOR THE USE OF PUBLIC WATER SERVICE AND WASTEWATER SERVICE ON THIS 21st DAY OF SEPTEMBER, 2011.

[Signature]
DEPT. REPRESENTATIVE

SEP 23 2011

Certified True Copy
LORI HENDERSON, COUNTY CLERK
MISSOURI COUNTY, OREGON