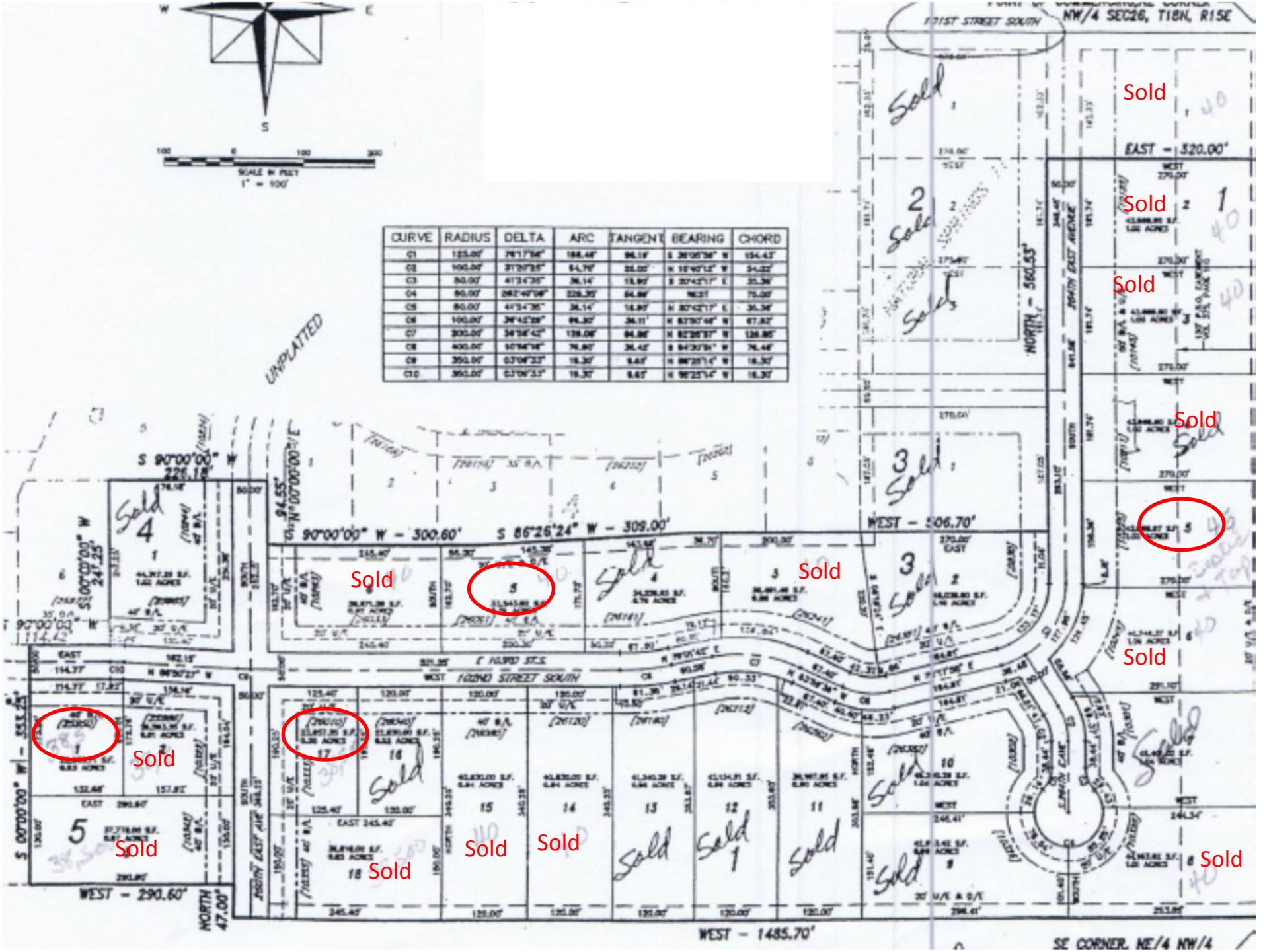


| CURVE | RADIUS | DELTA | ARC | TANGENT | BEARING | CHORD |
|-------|---------|------------|---------|---------|---------------|---------|
| C1 | 125.00' | 78°17'56" | 188.48' | 86.18' | S 28°05'26" W | 154.43' |
| C2 | 100.00' | 91°20'35" | 84.70' | 28.00' | N 18°45'12" W | 34.22' |
| C3 | 80.00' | 47°34'35" | 36.14' | 18.87' | S 20°42'11" E | 33.36' |
| C4 | 80.00' | 282°40'08" | 228.35' | 84.88' | N 02°1' | 70.00' |
| C5 | 80.00' | 47°34'35" | 36.14' | 18.87' | N 80°42'11" E | 34.36' |
| C6 | 100.00' | 28°42'28" | 64.32' | 24.11' | N 87°30'46" W | 67.82' |
| C7 | 300.00' | 34°36'42" | 139.08' | 84.88' | N 82°28'31" W | 128.85' |
| C8 | 400.00' | 10°36'38" | 76.80' | 26.42' | S 84°30'34" W | 76.48' |
| C9 | 350.00' | 63°10'33" | 18.30' | 8.67' | N 88°25'14" W | 18.30' |
| C10 | 350.00' | 63°10'33" | 18.30' | 8.67' | N 88°25'14" W | 18.30' |

UNPLATTED



Sold 1

Sold 2

Sold 3

Sold 3

Sold 3

Sold 10

Sold 9

Sold

Sold

Sold

Sold

Sold

Sold

40

40

40

40

40

40

40

EAST - 320.00'

WEST - 506.70'

WEST - 290.60'

WEST - 1485.70'

SE CORNER, NE/4 NW/4